

SCOOPEXL™

Always with the patient, from the immobilization, during the transport to the emergency room up to the inside of the diagnostic and emergency departments.

USER-FRIENDLY

It allows the operator to carry out all the handling manoeuvres required for the traumatised patient in any environment. It allows to immobilize a patient on any type of ground through the intervention of only two operators. Using SCOOPEXL™ is easy, fast and safe.

COMFORT

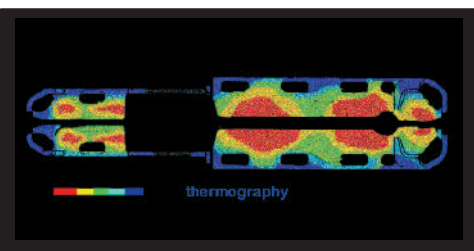
The concave shape is perfect for the patient comfort and guarantees more contact points between the body and other immobilisation aid.

SAFETY 1

The patented Twin Safety Lock (TSL) system prevents accidental opening of the SCOOP EXL™ stretcher. SCOOPEXL™ is easy to sanitise as all its components are easy to reach.

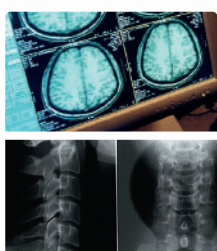
ERGONOMICS 3

Designed and manufactured according to the most advanced ergonomics criteria, it guarantees the operator to maintain a correct posture during all rescue and transport manoeuvres of the patient.



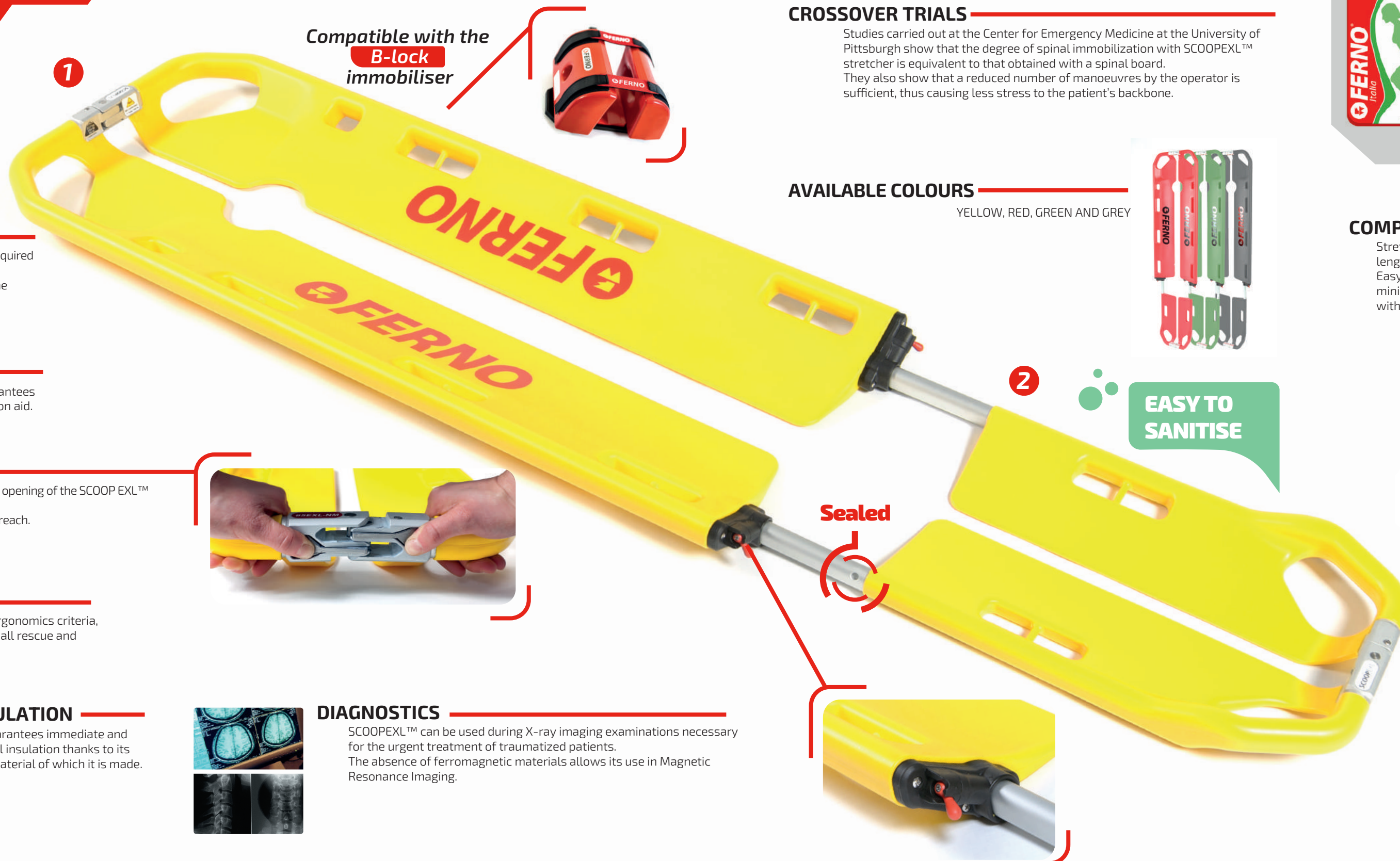
THERMAL INSULATION

SCOOPEXL™ guarantees immediate and effective thermal insulation thanks to its special plastic material of which it is made.



DIAGNOSTICS

SCOOPEXL™ can be used during X-ray imaging examinations necessary for the urgent treatment of traumatized patients. The absence of ferromagnetic materials allows its use in Magnetic Resonance Imaging.



1

Compatible with the B-lock immobiliser



CROSSOVER TRIALS

Studies carried out at the Center for Emergency Medicine at the University of Pittsburgh show that the degree of spinal immobilization with SCOOPEXL™ stretcher is equivalent to that obtained with a spinal board. They also show that a reduced number of manoeuvres by the operator is sufficient, thus causing less stress to the patient's backbone.

AVAILABLE COLOURS

YELLOW, RED, GREEN AND GREY



2

EASY TO SANITISE

COMPACTNESS AND TRANSPORTABILITY 2

Stretcher adaptability to any patient thanks to the possibility of length adjustment up to a maximum of 2010 mm. Easy to close and transport thanks to its reduced weight and minimum overall dimensions. It can be stored in an ambulance with minimum space requirements.



3

COMPLIANCE

Compliant with Locking systems compliant with

UNI EN 1865

UNI EN 1789

Not magnetic.



MAIN FEATURES

- ▶ Made of special aluminium alloy and plastic polymers, HDPE.
- ▶ Patented Twin Safety Lock (TSL) system.
- ▶ Ergonomic.
- ▶ Foldable and divisible into 2 parts.
- ▶ Adjustable in length up to 2010 mm.
- ▶ Compatible with X-ray diagnostic tests and MRI.
- ▶ Easy to sanitise.
- ▶ Compatible with quick-release restraints.
- ▶ Available colours: yellow, red, green and grey.

TECHNICAL SPECIFICATIONS

Maximum length	2010 mm / 79.13 in
Minimum length	1647 mm / 64.82 in
Maximum width	432 mm / 17 in
Dimensions when folded	1200x430x80mm / 47x17x3.15 in
Weight	8 kg / 17.63 lb
Load capacity	227 kg / 500.44 lbs

EMERGENCY KIT

- 1 Bag/backpack
- 1 SCOOP EXL™ stretcher
- 1 Head immobiliser B-lock
- 1 WizLoc neck brace
- 4 Snap-hook restraints 436i
- 1 Disposable thermal blanket

cod 21-00026



COMPLETE SCOOP EXL KIT

- 1 SCOOP EXL™ stretcher
- 1 Head immobiliser B-lock
- 1 Bag for B-lock
- 4 Snap-hook restraints 436i

cod KIT-SCOOP EXL



ACCESSORIES



Head immobiliser B-lock

Dedicated head immobiliser that guarantees the use of the stretcher as an efficient immobilization system.

part no. 21-00022



Restraints

For patient safety. Thanks to the quick-release system, they reduce the application time.

part no. 0314122



Locking system

Made and certified to fix the SCOOP EXL™ stretcher in vertical position. Certified according to UNI EN 1789.

part no. 561-V

FERNO

for Italy

P +39 051 6860028

info.it@ferno.com

www.ferno.it

Numero Verde
800 501711

FERNO

for Schweiz

P +41-41-2596000

info.ch@ferno.com

www.ferno-schweiz.ch

SCOOP EXL™

FERNO



FERNO TSL EXPANDER KIT

A high-strength aluminium alloy accessory to be applied to the Scoop EXL atraumatic stretcher. Designed to handle and transport a corpulent patient. With the Easy Lift rescue bridles, the Scoop EXL stretcher and the TSL Expander Kit can also be used with lifting devices.

MAIN FEATURES

- load capacity of 227 Kg
- assembly in a few seconds
- patented closing system to prevent accidental opening of the stretcher
- totally decontaminable
- self-releasing high-load metal restraints
- easy to store



THE KIT CONTAINS:

- 2 red expanders
- 3 restraint extensions
- 1 containment bag